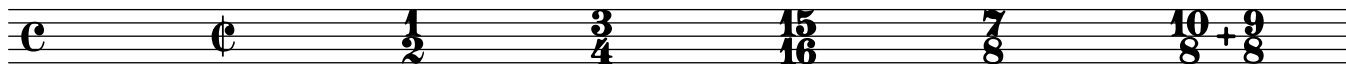


# BASIC FONT TEST

Haydn

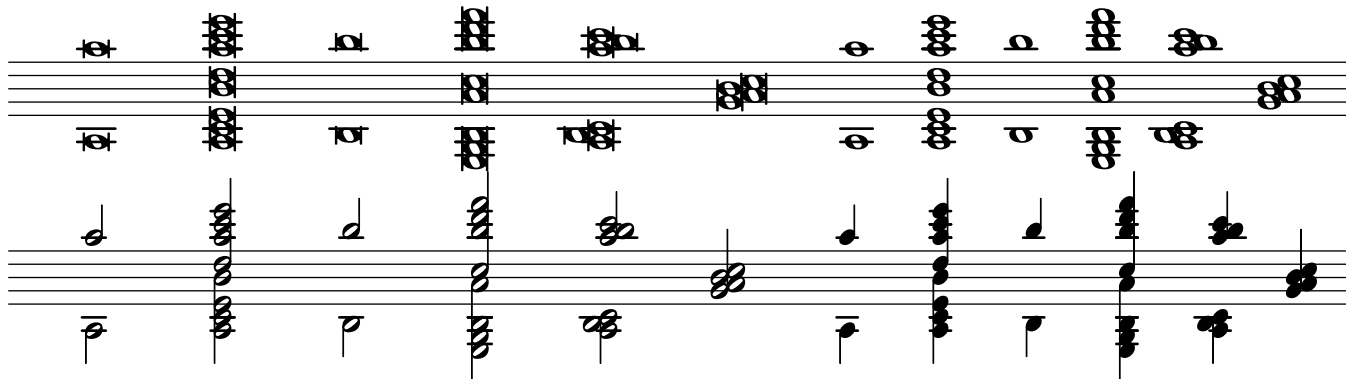
## Time Signatures



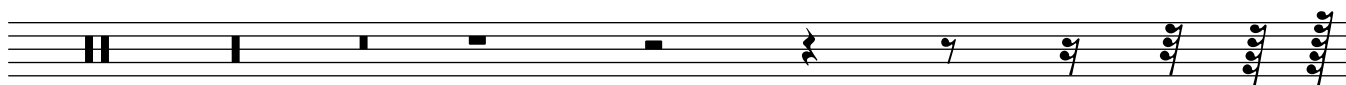
## Clefs



## Noteheads



## Rests



## Flags



## Dynamics



Articulations

A series of six musical staves illustrating various articulation techniques. The first staff shows notes with accents (>), breath marks (^), and slurs. The second staff includes notes with staccato (stacc.) and accents. The third staff features notes with various ornaments and slurs. The fourth and fifth staves show notes with slurs and accents. The sixth staff includes notes with slurs, accents, and a fermata.

Key Signatures

A musical staff showing various key signatures: C major (no sharps or flats), G major (one sharp), D major (two sharps), A major (three sharps), F major (no sharps or flats), Bb major (two flats), and Eb major (three flats).

Braces, Brackets, & Accidentals

A musical staff with five staves, each containing a chord with various accidentals and symbols. The first staff has four flats (bb) and a brace. The second staff has two flats (b) and a brace. The third staff has two flats (b) and a brace. The fourth staff has two sharps (#) and a brace. The fifth staff has two crosses (x) and a brace.