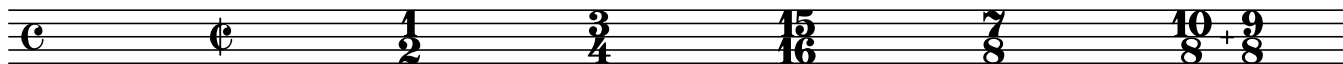


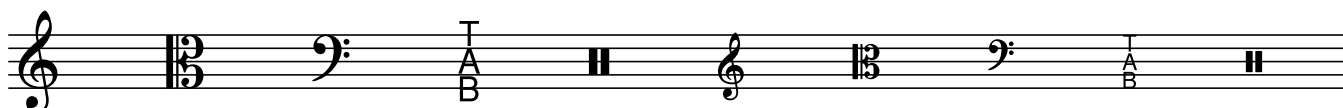
BASIC FONT TEST

Profondo

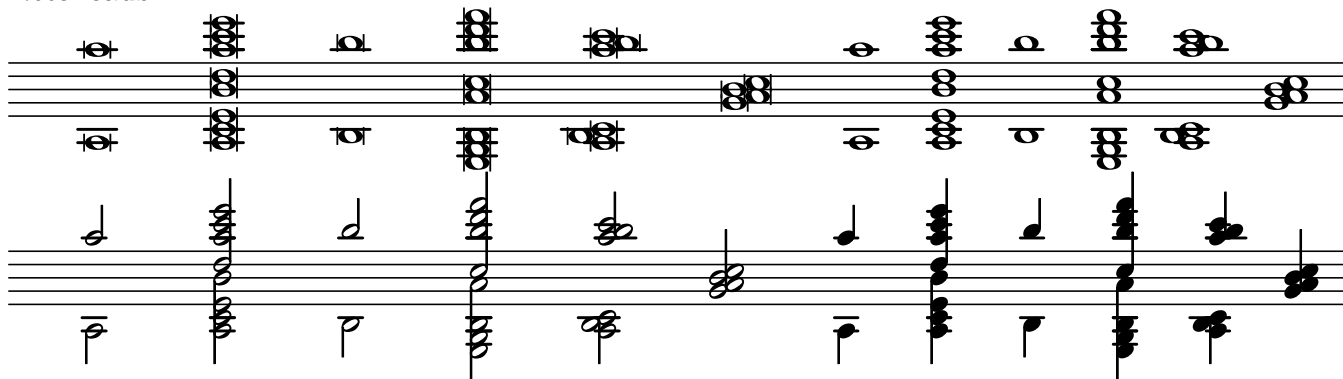
Time Signatures



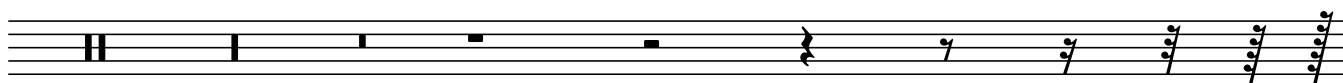
Clefs



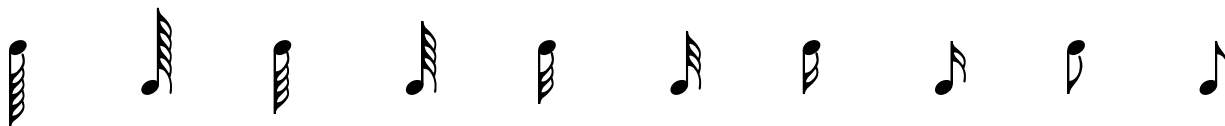
Noteheads



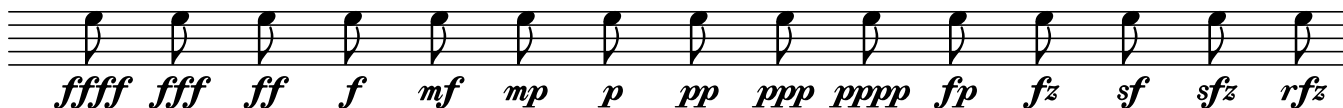
Rests



Flags



Dynamics



Articulations

This section contains six staves of musical notation. The first three staves feature quarter notes with various articulation marks: accents (^), breath marks (v), staccato marks (staccato), and slurs. The fourth staff shows quarter notes with slurs and accents, ending with a double bar line. The fifth staff shows quarter notes with slurs and accents, ending with a double bar line. The sixth staff shows quarter notes with slurs and accents, ending with a double bar line and a fermata.

Key Signatures

This section shows two staves of musical notation. The first staff is in treble clef and shows key signatures for C major, G major, D major, A major, and E major. The second staff is in bass clef and shows key signatures for F major, C major, G major, D major, and A major.

Braces, Brackets, & Accidentals

This section shows a grand staff with five staves. The first two staves are in bass clef and show chords with various accidentals (flats and naturals). The last three staves are in treble clef and show chords with various accidentals (sharps and naturals). The notation includes various braces and brackets to group notes and accidentals.