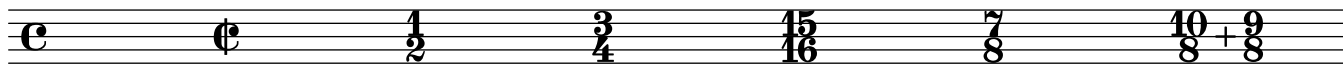


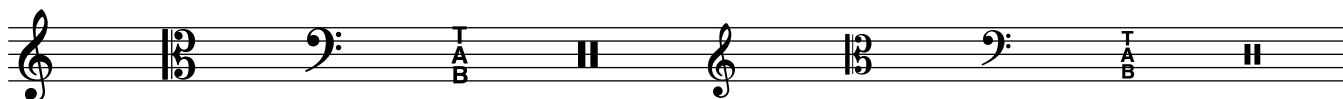
BASIC FONT TEST

Scorlatti

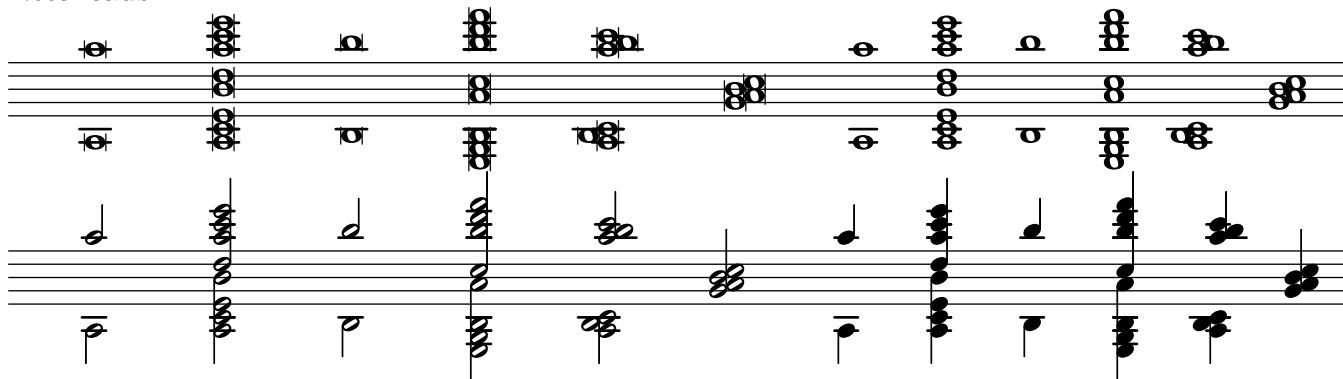
Time Signatures



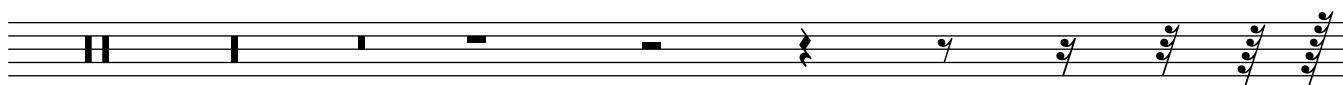
Clefs



Noteheads



Rests



Flags




Dynamics



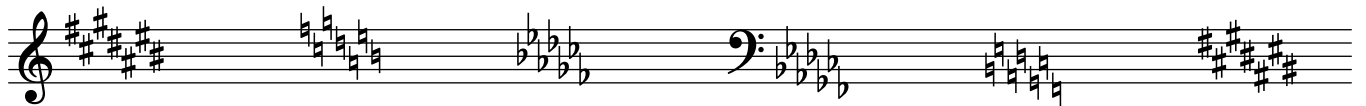
2

Articulations



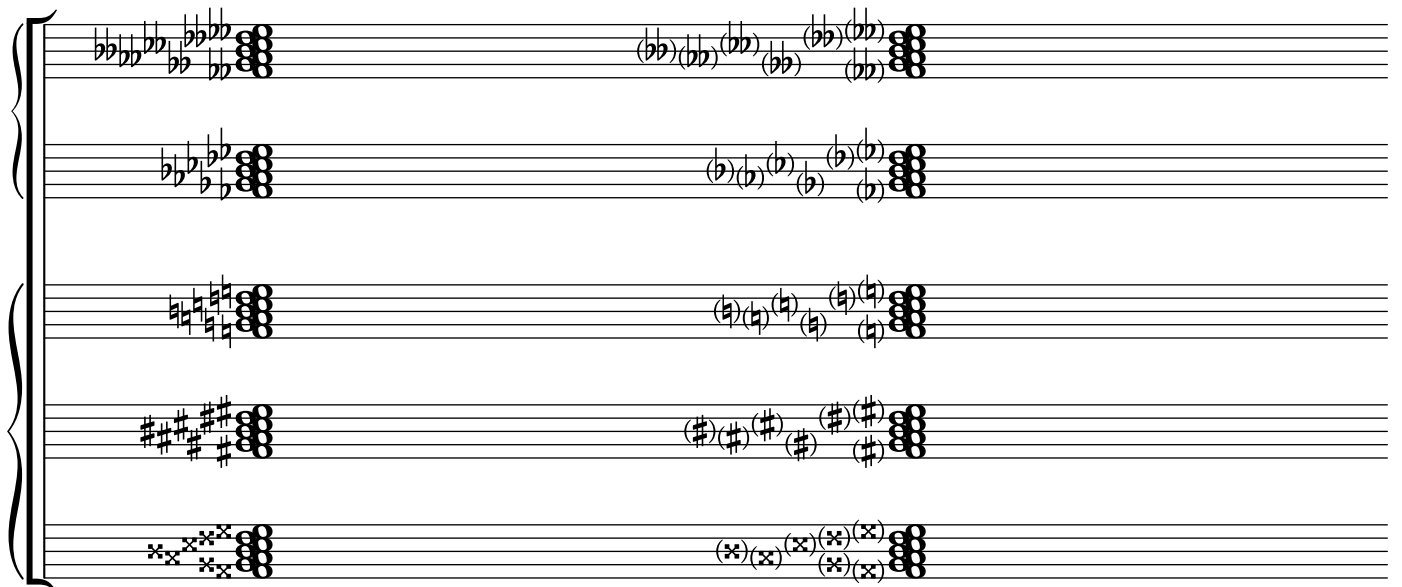
This section contains six staves of musical notation illustrating various articulation marks. The first three staves show eighth notes with various accents (v, >, ^, -) and trills (tr). The last three staves show quarter notes with various accents (v, >, ^, -) and trills (tr), along with other symbols like 'u', 'o', '+', 'ø', 'φ', 'S', 'Φ', '♯', 'Seq.', and '*'. The notation includes various rhythmic values and articulation marks such as accents, trills, and dynamic markings.

Key Signatures



This section shows key signatures for major and minor scales. It includes a treble clef with a major key signature (one sharp), a bass clef with a minor key signature (two flats), and a bass clef with a minor key signature (three flats). The notation shows the sequence of sharps and flats for each key signature.

Braces, Brackets, & Accidentals



This section illustrates various musical symbols used for grouping and accidentals. It shows a grand staff with five staves. The first two staves show chords with flats (bb) and parentheses (b). The next two staves show chords with sharps (#) and parentheses (#). The fifth staff shows chords with crosses (x) and parentheses (x). The notation includes various symbols like flats, sharps, parentheses, and crosses, along with their corresponding accidentals.